



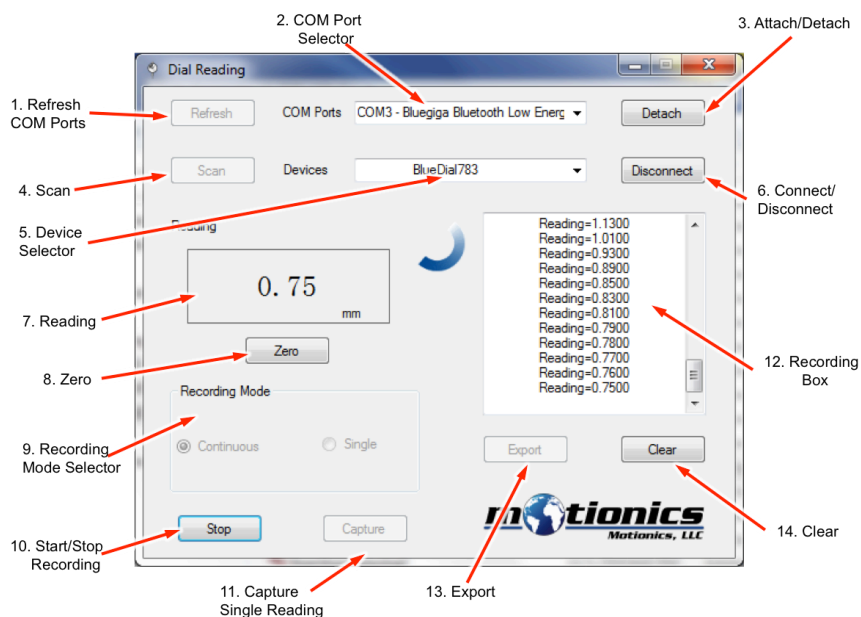
Wireless Dial Reading Windows PC User Guide

Important Notes

- You need Motionics WiMER or BlueDial and USB dongle BLED112 to use this software
- A more detailed instruction can be found on <http://motionics.com/dial-reading-pc.html>

Interface

1. **Refresh COM Ports** – search for connected USB dongles
2. **COM Port Selector** – select COM port for USB dongle
3. **Attach/Detach Button** – attach/detach USB dongle
4. **Scan Button** – search for nearby measurement devices
5. **Device Selector** – select a measurement device to connect
6. **Connect/Disconnect Button** – connect/disconnect a wireless device
7. **Reading** – displays readings from the connected device
8. **Zero Button** – remotely zero the measurement device
9. **Recording Mode Selector** – select Continuous or Single recording mode
10. **Record/Stop Button** – start/stop data recording in Continuous mode
11. **Capture Button** – press to capture a reading in Single mode
12. **Recording Box** – displays recorded readings
13. **Export Button** – press to export recorded data in CSV file
14. **Clear Button** – press to clear recording box



Download

- Download Dial Reading from <http://motionics.com/downloads.html>
- Download USB Dongle driver if it is not automatically installed <https://www.bluegiga.com/en-US/products/bled112-bluetooth-smart-dongle>

Installation

- Connect the USB dongle to one of the USB ports of the PC
- For first time use, wait for Windows to automatically search and install required driver
- If driver is not automatically installed, use the link above to download manually
- Go to **Control Panel - System and Security - System - Device Manager**. In **Device Manager**, find the Bluetooth low energy dongle, right click, select **Update Driver Software**
- Select **Browse my computer for driver software**, select the path where the driver downloaded in previous step is stored, then click **Next**. If there is any prompted window appearing, just allow it to install the driver

Quick Start

- Connect the USB dongle, turn on BlueDial or WiMER and run **Dial Reading.exe**
- From **COM Port Selector** select the dongle and press **Attach** button
- Press **Scan** button to begin searching for nearby measurement devices
- Select the device from the **Device Selector** and press **Connect** button
- Once connected, device readings will show in the **Reading box**
- Press the **Zero** button to remotely zero the device, press again to restore previous value
- To record readings, choose **Continuous** mode and press **Record** button to start continuous recording or choose **Single** mode and press **Capture** button repeatedly to record each single reading
- Press **Export** button to export recorded data in a CSV file and press **Clear** button to clear recording box
- To disconnect the device, press **Disconnect** button