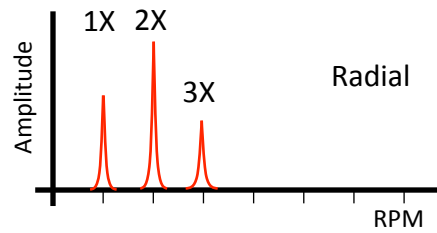
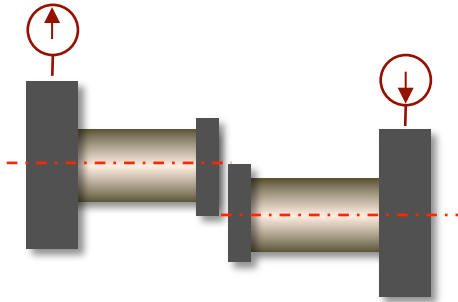
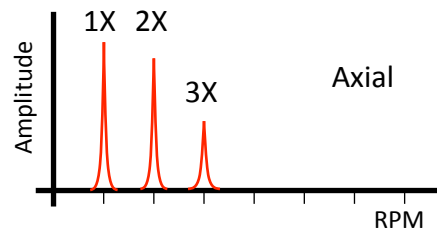
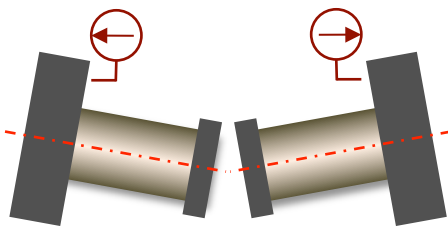


Parallel Misalignment



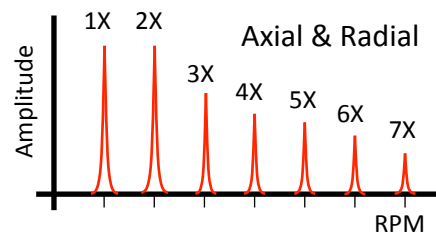
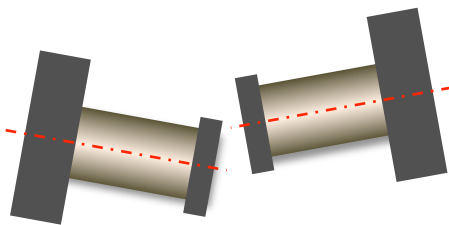
- High radial vibration
- Radial vibration 180 degrees out of phase
- 1X, 2X, 4X radial vibration with 2X dominant
- Very dependent on type of coupling

Angular Misalignment



- High axial force and vibration
- 180 degrees phase change across coupling
- 1X, 2X, 3X axial vibration with 1X & 2X dominant
- Very dependent on type of coupling

General Misalignment



- Combination of parallel and angular misalignments
- Axial and radial both show the frequency components
- Most common type of misalignment