

WiMER3 is the transmitter developed for Mitutoyo Linear Gage with 90° phase difference, differential square wave. WiMER3 directly powers connected linear gage and completes data collection and wireless transmission via Bluetooth Low Energy, helping users get rid of expensive and bulky signal conditioner.

Key Features

- Dimension: 104 x 56 x 23 mm
- Resolution: 0.0001 mm (depending on the linear gage)
- Range: 10 mm (depending on the linear gage)
- Sampling Frequency: 10 Hz
- Wireless Working Range: 10 m (line of sight)
- Working Temperature: 0-50 °C
- Battery: 2500 mAh rechargeable
- Charging: 5 VDC USB and 110 VAC
- Rotating angle resolution: 1° (for model with Angle Measurement only)



Applications

- Crankshaft Deflection Test
- Rotor Runout Test
- Bore Measurement
- Surface Profile Test

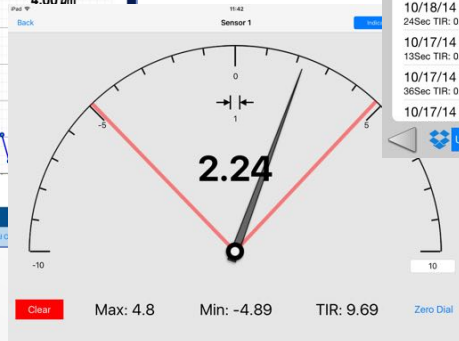
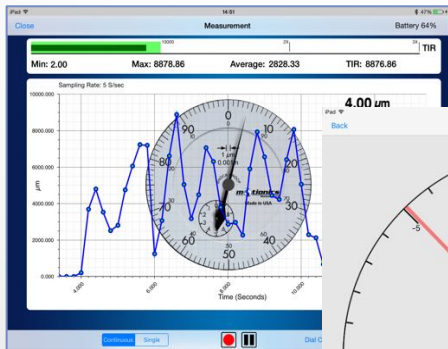
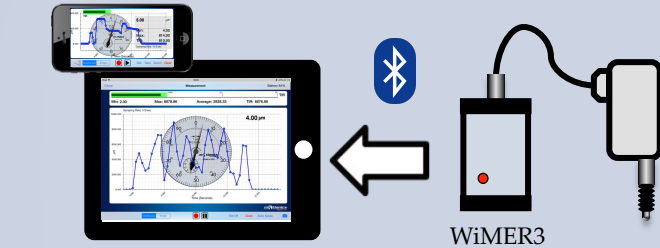
Compatible with Mitutoyo Linear Gage Models:

- 542-156, 161, 162, 171, 181, 204, 222, 230, 244, 262, 270, 401, 421, 612
- More

Apps Features:

- Free engineering Apps/Software
- Multiple devices simultaneous reading
- Display acquired data in real-time graph
- Continuous or Single Measurement recordings
- Analog rotating dial indicator on screen
- Probe meter with adjustable range
- Pinch, Pan, Max, Min, Average

- TIR (total indicator reading) & threshold/indicator
- Multiple sampling rate options
- Off-line post processing plot and polar plot
- Record data, CSV and SQLite database
- Export via email and Dropbox synchronization
- Quick custom PDF report with results, graphs, image, logo, signature, map and GPS location



List of Measurements	Recordings
10/20/14 10:16 Imbal... 17Sec TIR: 607.000	3.000 μm 0.100 Seconds
10/20/14 10:15 Imbal... 6Samples TIR: 669.000	3.000 μm 0.200 Seconds
10/18/14 11:18 24Sec TIR: 0.060	3.000 μm 0.300 Seconds
10/17/14 11:04 13Sec TIR: 0.060	3.000 μm 0.400 Seconds
10/17/14 11:00 36Sec TIR: 0.060	3.000 μm 0.500 Seconds
10/17/14 09:33	3.000 μm

