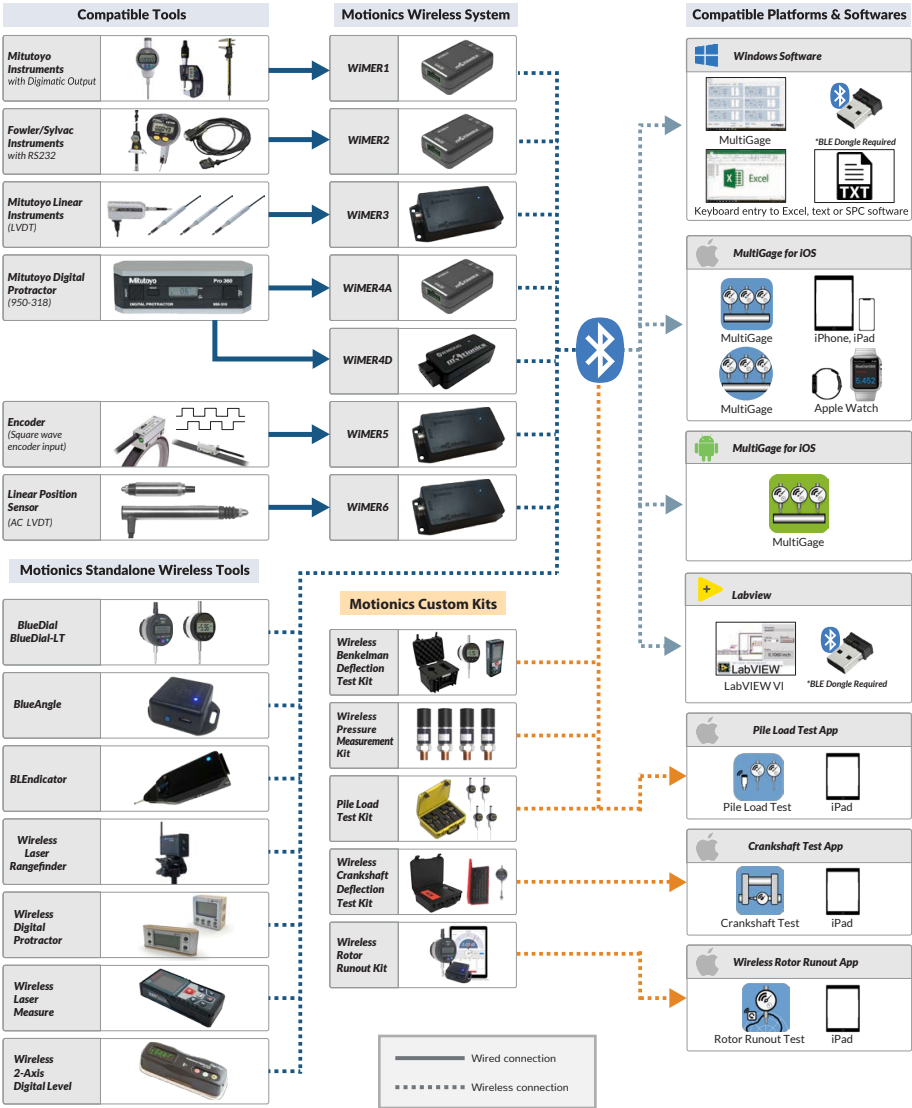


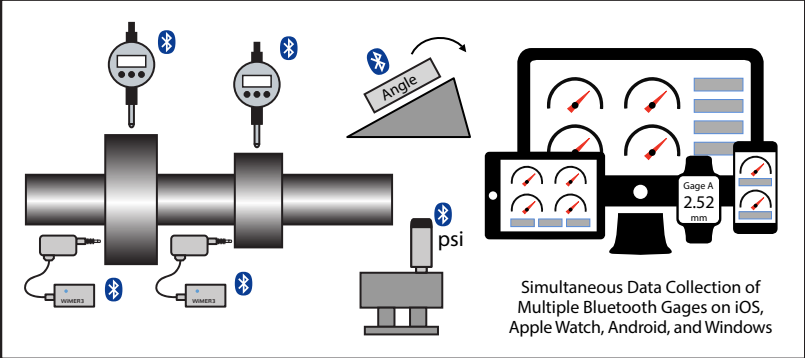
# Product Selection Guide

## Wireless Dimensional

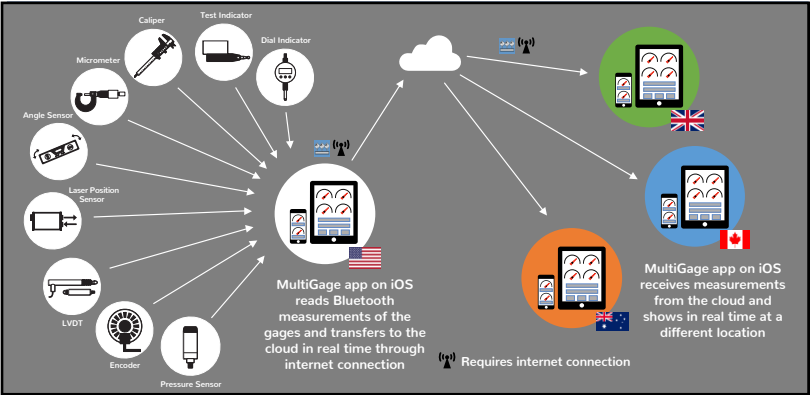


Motionics specializes in bringing smart solutions to industrial metrology applications. We provide diverse external transmitters, compatible with a wide range of instruments from different manufacturers, to add wireless data transmission capability to your existing gages. We also offer standalone Bluetooth dial indicators, angle sensors, and pressure sensors for various applications. With the help of our apps/software covering iOS, Android, Windows and LabVIEW, dimensional measurement will be safer, more efficient, and error-free.

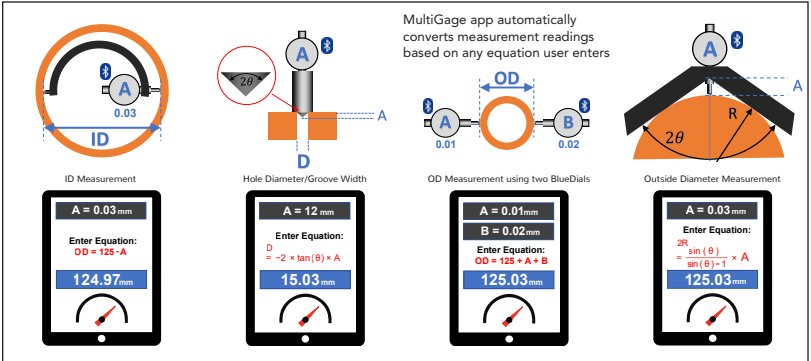
Wireless Multi-Gage Measurement Solution - iOS, Android, & Windows



Real-Time Cloud Streaming of Multi-Gage Measurement - iOS



Measurement Calculator with Custom Equation - iOS



# BlueDial

## Digital Dial Indicator With Integrated Bluetooth Low Energy Transmitter

### BlueDial








Comparison Table

	BlueDial		BlueDial-LT					
								
Product ID	BD10-783	BD10-793	BDLT-102	BDLT-103	BDLT-202	BDLT-203	BDLT-302	BDLT-402
Specifications								
Measurement Range	0.5" 12.7mm			1" 25mm		2" 50mm	4" 100mm	
Resolution	0.0005" 0.01mm	0.0001" 0.001mm	0.0005" 0.01mm	0.00005" 0.001mm	0.0005" 0.01mm	0.00005" 0.001mm	0.0005" 0.01mm	
Accuracy	0.0008 in	0.00012 in	±0.001 in	±0.0002 in	±0.001 in	±0.0002 in	0.001 in	
Wireless Data Rate	10 samples/sec		8 samples/sec				10 samples/sec	
Transmission Range	20 m (indoors)/ 30 m (outdoors)							
Stem Size	3/8"		8 mm				3/8"	
Tip Thread	4-48UNF		M2.5				4-48UNF	
Battery	Rechargeable							
Battery life	60 hours		50 hours					
Mounting Options	Stem*							Stem/Back lug
Hardware								
Dial Indicator	Mitutoyo 543-793		Motionics Dial					
Bluetooth Transmitter	On back							Top-mounted
USB Charging Kit								
Free Software								
iOS iPhone/iPad/Apple Watch								
Android 4.3 and after								
Windows PC**								
LabVIEW** Customizable								
Optional Accessories***								
BLE USB Dongle								
Pelican Case 1010								
Pelican Case 1040								
Pelican Case 1120								
Mitutoyo 7033B Base								
NOGA DG61003 Base								
Extension Rod 4-48UNF 1-6" one each								

\* Back lug mounting available upon request  
 \*\* Requires BLE USB dongle  
 \*\*\*Purchase separately; refer to Accessories page for additional information

# WiMER

Wireless (Bluetooth Low Energy) Transmitter For Dimensional Measurement Gages




<h1>WiMER</h1> <h2>Comparison Table</h2>								
Product ID	W1	W2	W3	W4A	W4D	W5	W6	
Compatibility	Mitutoyo Instruments	Fowler Instruments	Mitutoyo Linear Gages LVDT	Mitutoyo Digital Protractor 950-318	Mitutoyo Digital Protractor 950-318	Encoders Optical/Magnetic Linear/Rotary	AC LVDT	
Specifications								
Dimensions	2.50 x 1.63 x 0.80 in		4.09 x 2.20 x 0.91 in	2.50 x 1.630 x 0.80 in	1.97 x 0.98 x 0.61 in	4.09 x 2.20 x 0.91 in		
Data Transmission	Bluetooth Low Energy							
Wireless Data Rate	10 samples/sec	10 samples/sec	30 samples/sec	2 samples/sec		30 samples/sec		
Capturing Mode	Single/Continuous							
Transmission Range	20 m (indoors)/ 30 m (outdoors)							
Working Temperature	0-50°C							
Battery	Rechargeable 400 mAh	Rechargeable 400 mAh	Rechargeable 3200 mAh	Rechargeable 400 mAh	Powered by battery in protractor 9V	Rechargeable 3200 mAh	Rechargeable 3200 mAh	
Battery Life	60 hours	20 hours	30 hours		120 hours	30 hours (depending on encoder)	15 hours	
Hardware								
Data Cable	Optional	Optional	Not needed	✓	Not needed	Not needed	Not needed	
Data Trigger Switch	✓	✓	—	✓	—	—	—	
Foot Switch Connector Port (2.5mm)	✓	✓	—	✓	—	—	—	
USB Charging Kit	✓	✓	✓	✓	—	✓	✓	
BLE USB Dongle	Optional	Optional	Optional	Optional	Optional	Optional	Optional	
Compatible Instruments	Caliper Series 500, 551, 552, 573 Height Gage Series 192, 570, 574 Micrometer Series 277, 293, 314, 317, 323, 324, 326, 331, 342, 343, 369, 389, 395, 406, 422 Caliper Series 573 Dial Indicator Series 543 with SPC output Dial Indicator Series 575 Thickness Gage Series 546 Digimatic Caliper Gage Series 209 And more	Micrometer 54-815-xxx Micrometer 54-866-xxx Micrometer 54-870-xxx Caliper 54-100-xxx with data output Caliper 54-110-xxx Dial Indicator 54-530-xxx Test Indicator 54-562-xxx And more	Linear Gage: 542-181, 182, 204, 222, 223, 224, 230, 244, 262, 264, 270, 401, 421, 612, 613  And more	Digital Protractor: Mitutoyo 950-318 PRO 360, PRO 3600	Digital Protractor: Mitutoyo 950-318 PRO 360, PRO 3600	Optical & magnetic encoders with 90° phase shift, differential square wave, RS422 (TTL) output	AC LVDT Gages (Linear variable differential transformers)	
Free Software								
iOS iPhone/iPad/Apple Watch	✓	✓	✓	✓	✓	✓	✓	
Android 4.3 and after	✓	✓	✓	✓	✓	✓	✓	
Windows PC*	✓	✓	✓	✓	✓	✓	✓	
LabVIEW* Customizable	✓	✓	✓	✓	✓	✓	✓	

\* Requires BLE USB dongle

# Accessories



## Cases\*

Comparison Table

	<div>Pelican Case 1010</div> 	<div>Pelican Case 1040</div> 	<div>Pelican Case 1120</div> 	<div>Pelican Case 1170</div> 
Product ID	Pelican1010	Pelican1040	Pelican1120	Pelican1170
Dimensions	4.37" x 2.87" x 1.68"	6.50" x 3.87" x 1.75"	7.29" x 4.78" x 3.33"	10.54" x 6.04" x 3.16"
Carries	Exactly one BlueDial	BlueDial and all charging accessories	BlueDial and all charging accessories	BlueDial and all charging accessories
Protection	IP67 - Water/dust proof	IP67 - Water/dust proof	IP67 - Water/dust proof	IP67 - Water/dust proof



## Magnetic Bases\*

Comparison Table

	<div>Magnetic Base</div> <div>Mitsutoyo 70338</div> 	<div>Magnetic Base</div> <div>NOGA DG61003</div> 
Product ID	70338	DG61003
Applicable Holding Stem Diameter	6 mm, 8 mm, 9.53 mm (3/8")	6 mm, 8 mm, 9.53 mm (3/8")
Dovetail Groove	Provided	Provided
Magnetic Pull	132 lbs	176 lbs
Overall Length	15 "	11 "

## Others

Comparison Table

	<div>USB Bluetooth</div> <div>Dongle-BLED112</div> 	<div>Extension Stem Rod Set</div> 
Product ID	BLED112	EXTR1
Features	Up to 8 WiMER/BlueDial simultaneous connection to Windows PC	6 piece dial/digital indicator extension stem rod; 4-48 indicator tip thread
Specifications	Required for Windows PC	1", 2", 3", 4", 5", 6" stem rod; combine up to 21"

\*Other sizes are available; contact us for details.

# BlueDial

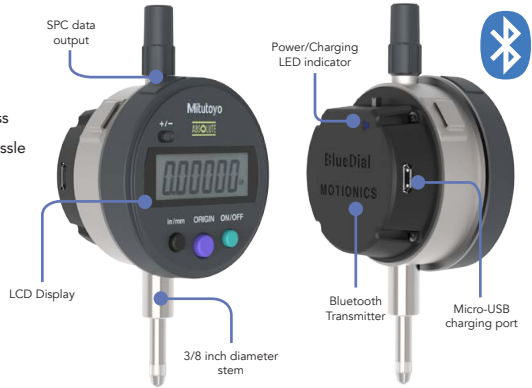
## Bluetooth Dial Indicator



BlueDial is a Mitutoyo indicator with an integrated Bluetooth transmitter on the back. Not only does BlueDial maintain high-accuracy measurement from Mitutoyo, but it also brings the convenience of wireless communication. It's a new solution to get rid of the hassle of wires/cables and improves efficiency and safety in deflection measurement applications.

### Features:

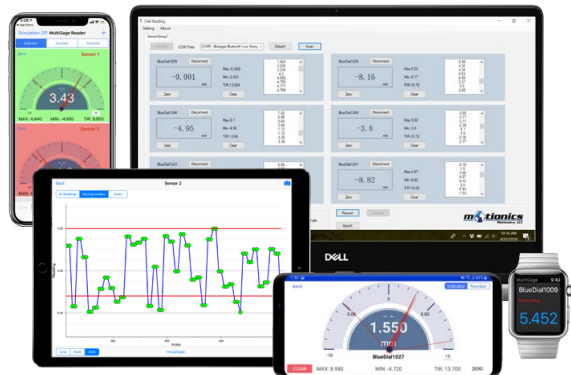
- Integrated Bluetooth Low Energy technology
- Multiple platform support (iOS, Android, PC and LabVIEW)
- Continuous and single mode data recording
- Rechargeable battery (60-hour life with a single charge)
- Multiple-device connectivity



Model	BD10-783	BD10-793
Measurement Range	.5 in/12.7 mm	
Resolution	0.0005 in/0.01 mm	0.0001 in/0.001 mm
Accuracy	0.0008 in	0.00012 in
Wireless Data Rate	10 Hz	
Transmission Range	20 m (indoors)/30 m (outdoors)	
Working Temperature	0 - 50°C	
Rechargeable Battery	400 mAh	
Battery Life	60 hrs	
Charging	5 VDC USB	

### More Features with our FREE Apps/Software\*

- Simultaneous reading of multiple devices
- Data plotting on iPhone/iPad/Android
- Continuous or single data point recording
- Max, Min, TIR measurement
- Remote zeroing from the app
- GO/NG judgment with green/red color indication
- Real-time cloud data streaming worldwide
- Custom formula calculator
- Large analog probe meter with adjustable range
- Data saving in local database
- Data export in CSV via email and cloud drives
- Keyboard entry to Excel or SPC software on PC
- Apple Watch support



Availability of features varies between apps/platforms.

# BlueDial LT

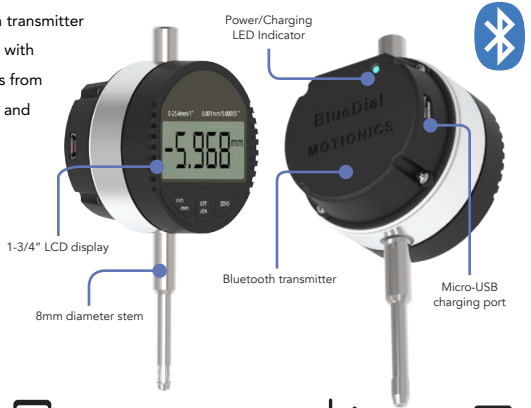
## Bluetooth Dial Indicator Lite



BlueDial-LT is a dial indicator with integrated Bluetooth transmitter on the back. It integrates a high-accuracy dial indicator with Bluetooth Low Energy data transmitter. All the readings from one or multiple BlueDial-LTs will be wirelessly collected and displayed on a smart device or PC.

### Features:

- Integrated Bluetooth Low Energy technology
- Multiple platform support (iOS, Android, PC)
- Continuous and single data recording
- Rechargeable battery (50-hour life with a single charge)
- Multiple-device connectivity

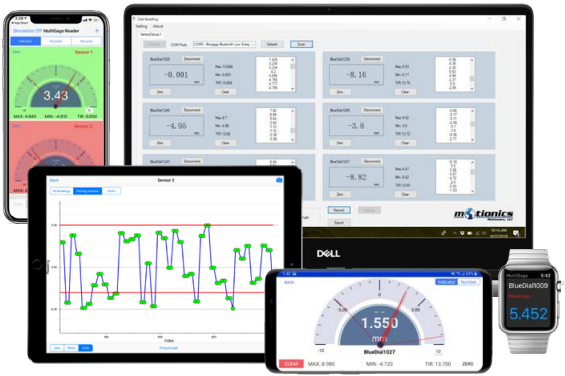


Model	BDLT-102	BDLT-103	BDLT-202	BDLT-203	BDLT-302	BDLT-402*
Measurement Range	.5 in/12.7 mm		1 in/25.4 mm		2 in/50.8 mm	4 in/101.6 mm
Resolution	0.0005 in/ 0.01 mm	0.00005 in/ 0.001 mm	0.0005 in/ 0.01 mm	0.00005 in/ 0.001 mm	0.0005 in/ 0.01 mm	0.0005 in/ 0.01 mm
Accuracy	±0.001 in	±0.0002 in	±0.001 in	±0.0002 in	±0.001 in	±0.001 in
Wireless Data Rate	8 Hz					
Transmission Range	20 m (indoors)/30 m (outdoors)					
Working Temperature	0 - 40°C					
Rechargeable Battery	400 mAh					
Battery Life	50 hrs					
Charging	5 VDC USB					

\*transmitter box connected to gage via cable

### More Features with our FREE Apps/Software\*

- Simultaneous reading of multiple devices
- Data plotting on iPhone/iPad/Android
- Continuous or single data point recording
- Max, Min, TIR measurement
- Remote zeroing from the app
- GO/NG judgment with green/red color indication
- Real-time cloud data streaming worldwide
- Custom formula calculator
- Large analog probe meter with adjustable range
- Data saving in local database
- Data export in CSV via email and cloud drives
- Keyboard entry to Excel or SPC software on PC
- Apple Watch support



Availability of features varies between apps/platforms.

# WiMER1

## Wireless Measurement Read Series 1



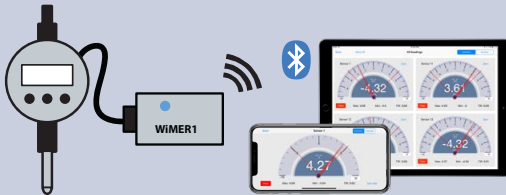
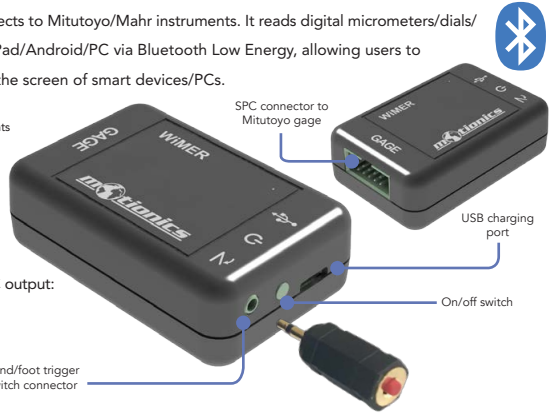
WiMER1 is a wireless measurement device that connects to Mitutoyo/Mahr instruments. It reads digital micrometers/dials/calipers and communicates wirelessly with iPhone/iPad/Android/PC via Bluetooth Low Energy, allowing users to view and record measurement readings directly on the screen of smart devices/PCs.

### Features

- Bluetooth transmitter compatible with various Mitutoyo instruments
- Multiple platform support (iOS, Android, PC and LabVIEW)
- Continuous and single modes data recording
- Rechargeable battery
- Comes with a small data trigger hand switch
- Data trigger 2.5 mm standard port to connect to foot switch

Compatible with Mitutoyo/Mahr instruments with SPC output:

- Dial indicator 543 series
- Caliper 500, 551, 552, 573
- Micrometer 227, 293, 314, 317, 323, and more
- More Mitutoyo instruments with digimatic output
- More Mahr instruments with digimatic output



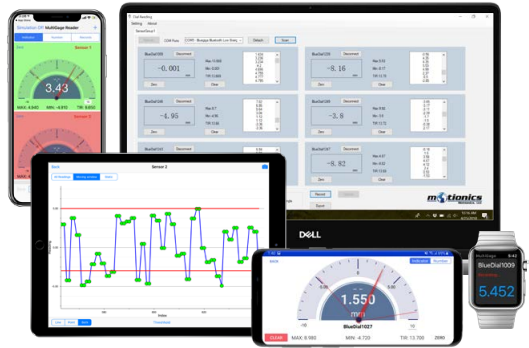
Mitutoyo Gages



WiMER1	Specification
Measurement Range	0.5 in/12.7 mm (depending on instrument)
Resolution	0.0005 in/0.01 mm (depending on instrument)
Accuracy	0.0008 in (depending on instrument)
Wireless Data Rate	10 Hz
Transmission Range	20 m (indoors)/30 m (outdoors)
Dimensions	2.50 x 1.63 x 0.80 in
Working Temperature	0 - 50 °C
Rechargeable Battery	400 mAh
Battery Life	60 hrs
Charging	5 VDC USB

### More Features with our FREE Apps/Software\*

- Simultaneous reading of multiple devices
- Data plotting on iPhone/iPad/Android
- Continuous or single data point recording
- Max, Min, TIR measurement
- Remote zeroing from the app
- GO/NG judgment with green/red color indication
- Real-time cloud data streaming worldwide
- Custom formula calculator
- Large analog probe meter with adjustable range
- Data saving in local database
- Data export in CSV via email and cloud drives
- Keyboard entry to Excel or SPC software on PC
- Apple Watch support



Availability of features varies between apps/platforms.



# WiMER2

## Wireless Measurement Read Series 2



WiMER2 is the wireless transmitter designed for Fowler/Sylvac users. It collects readings from Fowler/Sylvac instruments with RS232 outputs and transmits data wirelessly via Bluetooth Low Energy to iPhone/iPad/Android/PC. WiMER2 also powers the connected instrument; no external power supply is needed.

### Features

- Bluetooth transmitter compatible with various Fowler/Sylvac instruments
- Multiple platform support (iOS, Android, PC and LabVIEW)
- Continuous and single mode data recording
- Rechargeable battery
- Comes with a small data trigger hand switch
- Data trigger 2.5mm standard port to connect to foot switch

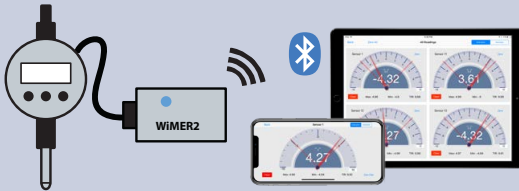


### Compatible with Fowler Digital Instruments:

- Micrometer 54-815/866/870
- Caliper 54-100 (with data output)/110
- Digital Indicator 54-530/562 and more



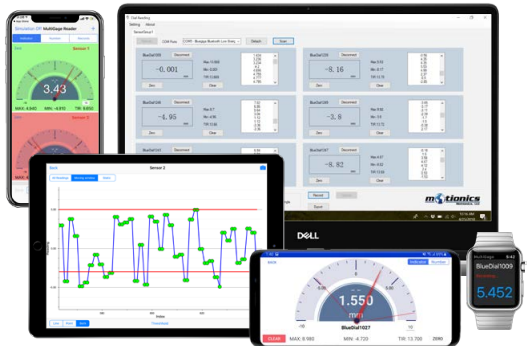
Dial sold separately.



WiMER2	Specification
Measurement Range	0.5 in/12.7 mm (depending on instrument)
Resolution	0.0005 in/0.001 mm (depending on instrument)
Accuracy	0.0005 in (depending on instrument)
Wireless Data Rate	10 Hz
Transmission Range	20 m (indoors)/30 m (outdoors)
Dimensions	2.50 x 1.63 x 0.80 in
Working Temperature	0 - 50 °C
Rechargeable Battery	400 mAh
Battery Life	20 hrs
Charging	5 VDC USB

### More Features with our FREE Apps/Software\*

- Simultaneous reading of multiple devices
- Data plotting on iPhone/iPad/Android
- Continuous or single data point recording
- Max, Min, TIR measurement
- Remote zeroing from the app
- GO/NG judgment with green/red color indication
- Real-time cloud data streaming worldwide
- Custom formula calculator
- Large analog probe meter with adjustable range
- Data saving in local database
- Data export in CSV via email and cloud drives
- Keyboard entry to Excel or SPC software on PC
- Apple Watch support



Availability of features varies between apps/platforms.

# WiMER 3

## Wireless Measurement Read Series 3



WiMER3 is the transmitter developed for Mitutoyo Linear Gage with 90° phase difference, differential square wave output. WiMER3 directly powers a connected linear gage and completes data collection and wireless transmission via Bluetooth Low Energy, helping users get rid of expensive and bulky signal conditioners.

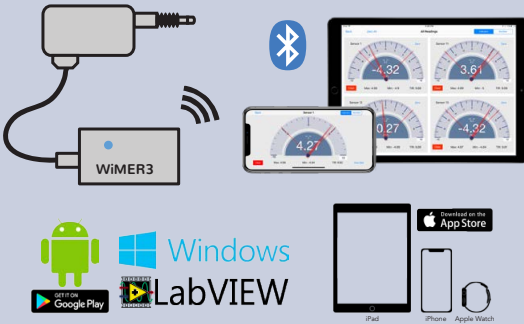


### Features

- Bluetooth transmitter compatible with various Mitutoyo linear gage
- Multiple platform support (iOS, Android, PC and LabVIEW)
- Power supply, signal conditioning and data transmission for linear gage
- Rechargeable battery

### Compatible with Mitutoyo Linear Gage Models:

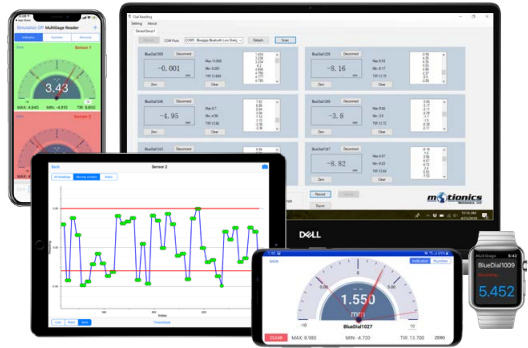
- 542-156, 161, 162, 171, 181, 204, 222, 230, 244, 262, 270, 401, 421, 612, and more



WiMER3	Specification
Measurement Range	0.39 in/10 mm (depending on linear gage)
Resolution	0.000005 in/0.0001 mm (depending on instrument)
Accuracy	0.0005 in (depending on instrument)
Wireless Data Rate	30 Hz
Transmission Range	20 m (indoors)/30 m (outdoors)
Dimensions	4.09 x 2.20 x 0.91 in
Working Temperature	0 - 50 °C
Rechargeable Battery	3200 mAh
Battery Life	30 hrs
Charging	5 VDC USB

### More Features with our FREE Apps/Software\*

- Simultaneous reading of multiple devices
- Data plotting on iPhone/iPad/Android
- Continuous or single data point recording
- Max, Min, TIR measurement
- Remote zeroing from the app
- GO/NG judgment with green/red color indication
- Real-time cloud data streaming worldwide
- Custom formula calculator
- Large analog probe meter with adjustable range
- Data saving in local database
- Data export in CSV via email and cloud drives
- Keyboard entry to Excel or SPC software on PC
- Apple Watch support



Availability of features varies between apps/platforms.

# WiMER 4A

## Wireless Measurement Read Series 4A



WiMER4A is the wireless transmitter for Mitutoyo digital protractor 950-318. Mitutoyo 950-318 is a gravity electronic sensor-based digital protractor. It covers measurement range of 360° (90°x4) with high resolution and high accuracy. It features a machined aluminum frame with an easy-to-read liquid crystal display.



### Features

- Continuous wireless reading of 0-360° in software
- Bluetooth Low Energy Technology
- Multiple platform support (iOS, Android, PC)
- Continuous and single mode data recording
- Rechargeable battery

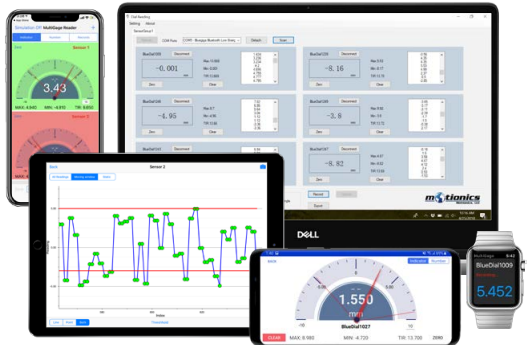
Compatible with Mitutoyo Protractor 950-318



WiMER4A	Specification
Measurement Range	360° (in software), 90° x 4 (on gage)
Resolution	0.01° (0° to 9.99°), 0.1 (10° to 90°)
Accuracy	0.05° (0° to 10°), 0.2° (10° to 80°), 0.1° (80° to 90°)
Wireless Data Rate	2 Hz
Transmission Range	20 m (indoors)/30 m (outdoors)
Dimensions	2.50 x 1.63 x 0.80 in
Working Temperature	0 - 50 °C
Rechargeable Battery	400 mAh
Battery Life	30 hrs
Charging	5 VDC USB

### More Features with our FREE Apps/Software\*

- Simultaneous reading of multiple devices
- Data plotting on iPhone/iPad/Android
- Continuous or single data point recording
- Max, Min, TIR measurement
- Remote zeroing from the app
- GO/NG judgment with green/red color indication
- Real-time cloud data streaming worldwide
- Custom formula calculator
- Large analog probe meter with adjustable range
- Data saving in local database
- Data export in CSV via email and cloud drives
- Keyboard entry to Excel or SPC software on PC
- Apple Watch support



Availability of features varies between apps/platforms.

# WiMER 4D

## Wireless Measurement Read Series 4D



WiMER4D is the dongle version of wireless transmitter WiMER4A for Mitutoyo digital protractor 950-318. Mitutoyo 950-318 is a gravity electronic sensor based, high-resolution, high-accuracy digital protractor. WiMER4D connects to the data port on the 950-318 protractor and wirelessly transmits protractor readings to iOS/Android smart devices and Windows PC.

### Features

- Continuous wireless reading of 0-360° in software
- Bluetooth Low Energy Technology
- Multiple platform support (iOS, Android, PC)
- Continuous and single mode data recording
- Powered directly by protractor; no external power needed

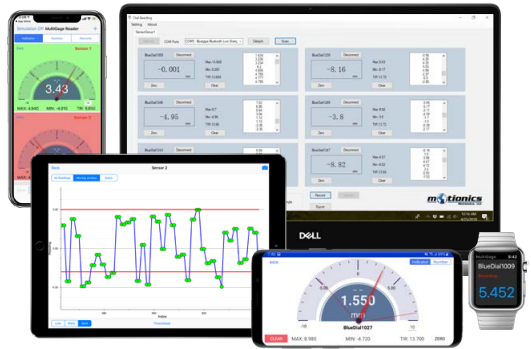
Compatible with Mitutoyo Protractor 950-318



WiMER4D	Specification
Measurement Range	360° (in software), 90° x 4 (on gage)
Resolution	0.01° (0° to 9.99°), 0.1° (10° to 90°)
Accuracy	0.05° (0° to 10°), 0.2° (10° to 80°), 0.1° (80° to 90°)
Wireless Data Rate	2 Hz
Transmission Range	20 m (indoors)/30 m (outdoors)
Dimensions	1.97 x 0.98 x 0.61 in
Working Temperature	0 - 50 °C
Battery	Powered by 9V battery in protractor
Battery Life	120 hrs

### More Features with our FREE Apps/Software\*

- Simultaneous reading of multiple devices
- Data plotting on iPhone/iPad/Android
- Continuous or single data point recording
- Max, Min, TIR measurement
- Remote zeroing from the app
- GO/NG judgment with green/red color indication
- Real-time cloud data streaming worldwide
- Custom formula calculator
- Large analog probe meter with adjustable range
- Data saving in local database
- Data export in CSV via email and cloud drives
- Keyboard entry to Excel or SPC software on PC
- Apple Watch support



Availability of features varies between apps/platforms.

# WiMER5

## Wireless Measurement Read Series 5



WiMER5 is a universal transmitter for optical and magnetic encoders with 90° phase shift, differential square wave, RS422 (TTL) output. WiMER5 provides a 5V power supply to the connected encoder, accurately interprets A & B quadrature signals with high-speed counter onboard, and transmits readings wirelessly via Bluetooth Low Energy.



### Features

- Compatible with a broad range of optical or magnetic and linear or rotary encoders
- Bluetooth Low Energy transmitter
- Multiple platform support (iOS, Android, PC and LabVIEW)
- Power supply, signal conditioning and data transmission all in one
- Rechargeable battery



Bluetooth Low Energy



Rechargeable



Multi-encoder compatibility



Multi-platform software capability



Multi-gage capability



Continuous recording and plotting



Data saving



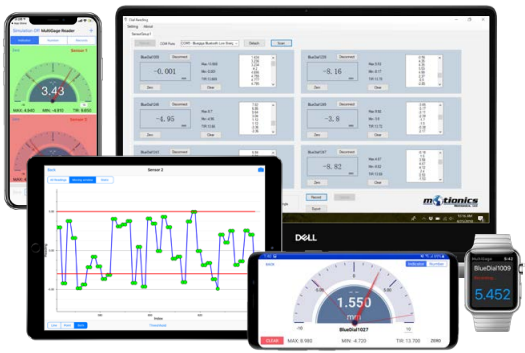
Windows



WiMER5	Specification
Measurement Range	depends on encoder
Resolution	depends on encoder
Accuracy	depends on encoder
Wireless Data Rate	30 Hz
Transmission Range	20 m (indoors)/30 m (outdoors)
Dimensions	4.09 x 2.20 x 0.91 in
Working Temperature	0 - 50 °C
Rechargeable Battery	3200 mAh
Battery Life	30 hrs (depending on encoder)
Charging	5 VDC USB

### More Features with our FREE Apps/Software\*

- Simultaneous reading of multiple devices
- Data plotting on iPhone/iPad/Android
- Continuous or single data point recording
- Max, Min, TIR measurement
- Remote zeroing from the app
- GO/NG judgment with green/red color indication
- Real-time cloud data streaming worldwide
- Custom formula calculator
- Large analog probe meter with adjustable range
- Data saving in local database
- Data export in CSV via email and cloud drives
- Keyboard entry to Excel or SPC software on PC
- Apple Watch support



Availability of features varies between apps/platforms.

Motionics, LLC  
8500 Shoal Creek Blvd Building 4 Suite 209  
Austin, TX 78757  
www.motionics.com info@motionics.com

The software & hardware can be customized.  
Contact Motionics for details.

© 2020 Motionics, LLC. All rights reserved.

# WiMER 6

## Wireless Measurement Read Series 6



WiMER6 is a signal conditioner and transmitter for AC linear variable differential transducers (LVDTs). It contains a low-distortion sine wave oscillator to generate steady excitation signals to drive the LVDT primary. LVDT secondary outputs are converted to a stable DC voltage onboard and sampled by a 16-bit ADC. The Bluetooth Low Energy module in WiMER6 then transmits readings wirelessly to iOS/Android smart devices and Windows PC.



### Features

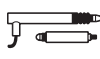
- Compatible with a broad range of AC LVDTs
- Bluetooth Low Energy transmitter
- Multiple platform support (iOS, Android, and PC)
- LVDT excitation, signal conditioning and data transmission all in one
- Powered by internal rechargeable battery; no external power supply needed



Bluetooth Low Energy



Rechargeable



Compatible with any AC LVDT



Multi-platform software capability



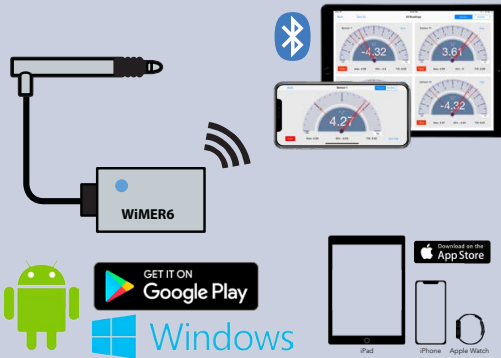
Multi-gage capability



Continuous recording and plotting



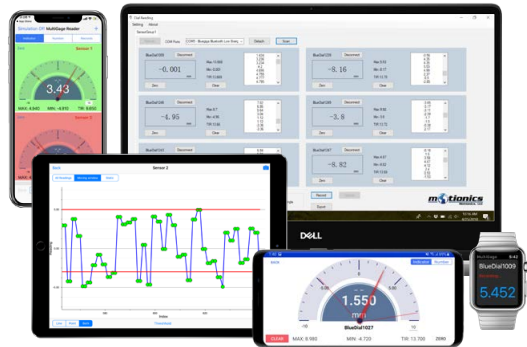
Data saving



WiMER6	Specification
Measurement Range	depends on LVDT
Resolution	depends on LVDT
Accuracy	depends on LVDT
Wireless Data Rate	30 Hz
Transmission Range	20 m (indoors)/30 m (outdoors)
Dimensions	4.09 x 2.20 x 0.91 in
Working Temperature	0 - 50 °C
Rechargeable Battery	3200 mAh
Battery Life	15 hrs
Charging	5 VDC USB

### More Features with our FREE Apps/Software\*

- Simultaneous reading of multiple devices
- Data plotting on iPhone/iPad/Android
- Continuous or single data point recording
- Max, Min, TIR measurement
- Remote zeroing from the app
- GO/NG judgment with green/red color indication
- Real-time cloud data streaming worldwide
- Custom formula calculator
- Large analog probe meter with adjustable range
- Data saving in local database
- Data export in CSV via email and cloud drives
- Keyboard entry to Excel or SPC software on PC
- Apple Watch support



Availability of features varies between apps/platforms.

# WLRF

## Wireless Laser Rangefinder



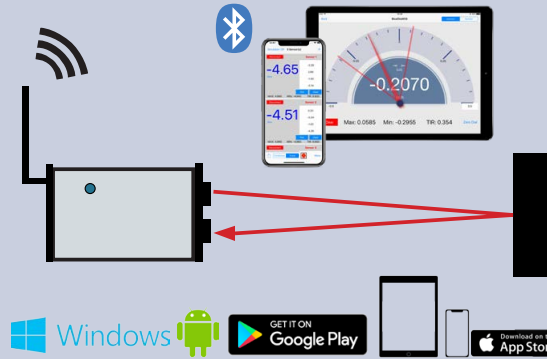
Wireless Laser Rangefinder (WLRF) is capable of quickly and accurately identifying the distance to a target up to 200 m away. With a built-in Bluetooth Low Energy transmitter, laser measurement readings can be wirelessly viewed and collected on iPhone, iPad, Android and Windows devices.

There is an inclinometer embedded inside WLRF to monitor device tilt angle simultaneously with laser distance measurement, facilitating applications that require intersection scanning.

WLRF has a standard 1/4-20 thread mounting hole to allow the user to easily mount the device on a common tripod for quick and steady setup.

### Features:

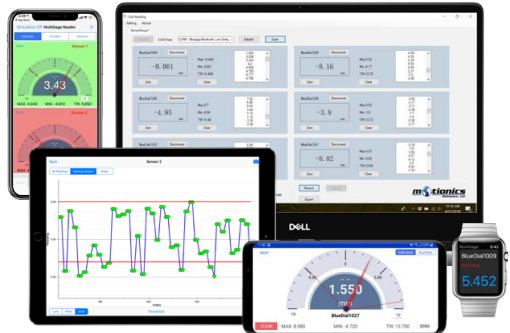
- Built-in Bluetooth Low Energy technology
- Power supply, signal conditioning and data transmission all in one
- 100% cable free
- Rechargeable battery



WLRF	Specification
Measurement Range	0.2 to 125 m (18% reflectivity); 0.2 to 200m (80% reflectivity)
Resolution	1 cm
Accuracy	10 cm
Laser Class	Class 1
Wireless Data Rate	10 Hz
Transmission Range	20 m (indoors)/30 m (outdoors)
Working Temperature	0 - 50 °C
Rechargeable Battery	3200 mAh
Battery Life	30 hrs
Dimension	120 x 78 x 43 mm
Weight	300 g

### More Features with our FREE Apps/Software\*

- Simultaneous reading of multiple devices
- Data plot on iPhone/iPad
- Continuous or Single data recording
- Max, Min, TIR measurement
- Reading remote zero in the app
- Real-time cloud data streaming to worldwide
- Custom formula calculator
- Probe meter with adjustable range
- Measurement voice read in 9 languages
- Data export in CSV via Email and cloud drives



Availability of features varies between apps/platforms.



# BlueAngle

Bluetooth Angle Sensor



BlueAngle is a gyroscope-based Bluetooth angle sensor that can be easily attached to a rotor with its magnetic base. While rotating with the rotor, BlueAngle continuously measures the rotating angle between 0° and 360° and wirelessly transmits readings to iPad. The gyroscope-based characteristics of BlueAngle allows angle measurement in both vertical and horizontal axes by attaching the sensor to any part of the rotating object.

BlueAngle works as a part of the wireless rotor runout kit. When syncing deflection measurements from BlueDial and angle readings from BlueAngle, the real contour profile of a rotor can be obtained and depicted on iPad effortlessly.



Bluetooth  
Low Energy



Rechargeable



Full 360° 2-axis  
measurement



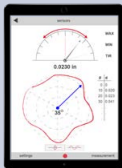
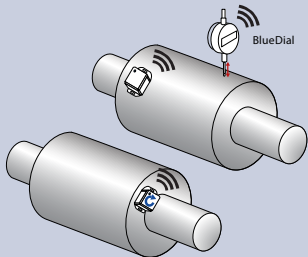
Multi-gage capability



Continuous recording  
and plotting



Data saving



Windows

BlueAngle	Specification
Measurement Range	360°
Resolution	0.1°
Wireless Data Rate	50 Hz
Transmission Range	Up to 20 m
Dimensions	1.58 x 1.58 x 0.79 in
Working Temperature	0 - 50°C
Rechargeable Battery	150 mAh
Battery Life	10 hrs
Charging	5 VDC USB

### Runout App Features:

NOTE: BlueAngle is a part of the Motionics Rotor Runout Kit.

- Simultaneous wireless connectivity of deflection sensor and angle sensor
- Multiple deflection sensor connectivity (test up to 9 simultaneously)
- Probe meter for deflection readings with adjustable range
- 2 probe meter styles for high and low resolutions
- Analog rotating dial indicator on screen
- Remote zeroing of deflection and angle sensors
- User-defined number of test points on rotor circumference
- Cartesian plot and polar plot
- Direct screenshot of the results and plots to save locally
- Values and positions of Max/Min summarized in result table
- Exporting measurement via AirDrop, email or Cloud drives in CSV format
- PDF report with test information, machine image, test results, note, tester signature and map
- Local test records manager to retrieve previous data and reports



Availability of features varies between apps/platforms.



# BLEndicator

## Bluetooth Test Indicator



BLEndicator is a Bluetooth test indicator with remote readout. With its compact design, BLEndicator can fit into a borehole as small as 1.5" in diameter. Thanks to its Bluetooth connectivity, stylus movement can be directly read out on iPhone/iPad/Android/Windows PC, making it easier and faster to take measurements at hard-to-read locations.



### Features

- Built-in Bluetooth Low Energy technology
- Multiple platform support (iOS, Android, PC)
- Compact size for measurements at hard-to-read locations
- Rechargeable battery



Bluetooth Low Energy



Rechargeable



Multi-platform software capability



Multi-gage capability



Continuous recording and plotting



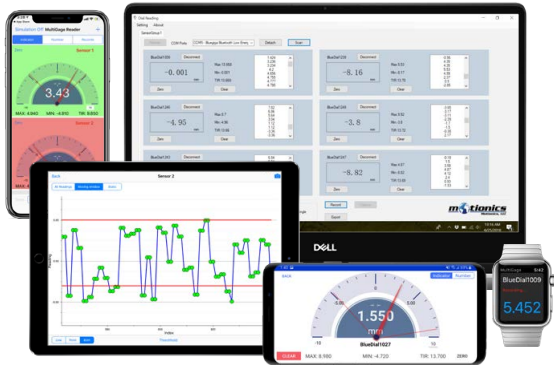
Data saving



BLEndicator	Specification
Measurement Range	0.17 in/4.3 mm
Resolution	.0001 in/0.001 mm
Accuracy	0.0006 in
Wireless Data Rate	8 Hz
Transmission Range	Up to 10 m
Dimensions	4.05 x 1.31 x 0.85 in (maximum)
Stylus Length	0.78 in
Working Temperature	0 - 50 °C
Battery Life	10 hrs
Charging	5 VDC USB

### More Features with our FREE Apps/Software\*

- Simultaneous reading of multiple devices
- Data plotting on iPhone/iPad/Android
- Continuous or single data point recording
- Max, Min, TIR measurement
- Remote zeroing from the app
- GO/NG judgment with green/red color indication
- Real-time cloud data streaming worldwide
- Custom formula calculator
- Large analog probe meter with adjustable range
- Data saving in local database
- Data export in CSV via email and cloud drives
- Keyboard entry to Excel or SPC software on PC
- Apple Watch support



Availability of features varies between apps/platforms.

# Bluetooth Digital Protractor BPPO



Motionics BPPO Bluetooth Digital Protractor is an economic digital protractor with built-in Bluetooth Low Energy technology. It covers a whole 360° (4x90°) range with 0.05° resolution and 0.2° accuracy. Thanks to its wireless data transmission feature, protractor readings can be easily read out in real time on the screen of a smartphone/tablet/Windows PC remotely and from any angle.

BPPO comes in two form factors, as a cube or as a torpedo level, for different applications. Strong magnets on the solid military grade alloy body allow the user to easily attach the protractor to any steel surface for measurement.

## Features

- 360° (4x90°) reading range
- Bluetooth Low Energy Technology
- Multiple platform support (iOS, Android, PC)
- Large reading on smart device/PC screen, no more viewing angle issues
- Rechargeable battery



Bluetooth Low Energy



Rechargeable



Full 360° measurement



Multi-gage capability



Continuous recording and plotting



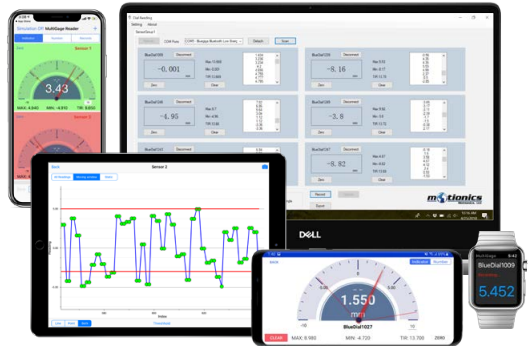
Data saving



Angle Sensor	BPPO-S	BPPO-L
Measurement Range	360° (90° x 4)	
Resolution	0.05°	
Accuracy	0.2°	
Repeatability	0.1°	
Wireless Data Rate	10 Hz	
Transmission Range	20 m (indoors)/30 m (outdoors)	
Dimensions	2.13 x 2.13 x 0.91 in	6 x 2.4 x 1.2 in
Working Temperature	0-50°C	
Battery	400 mAh	
Battery Life	30 hrs	
Charging	5 VDC USB	

## More Features with our FREE Apps/Software\*

- Multiple devices simultaneous reading
- Data plot on iPhone/iPad/Android
- Continuous or single data point recording
- Max, Min, TIR measurement
- Remote zeroing from the app
- GO/NG judgment with green/red color indication
- Real-time cloud data streaming worldwide
- Custom formula calculator
- Large analog probe meter with adjustable range
- Data saving in local database
- Data export in CSV via email and cloud drives
- Keyboard entry to Excel or SPC software on PC
- Apple Watch support



Availability of features varies between apps/platforms.

# Wireless Laser Measure

## Bosch GLM50



Bosch GLM50 is a compact pocket size yet highly accurate laser distance measure. It measures distances from up to 165 feet to within 1/8 inch. Thanks to its built-in Bluetooth Low Energy technology, laser measurement readings can be easily picked up wirelessly in Motionics apps/software on iPhone, iPad, Android, and Windows PC. When working together with other measurement devices in applications such as Benkelman tests, GLM50 provides accurate coordinate reference and greatly facilitates the test process.



### Features

- Long-range and high-accuracy measurement
- Bluetooth Low Energy Technology
- Multiple platform support (iOS, Android, PC)
- Continuous laser reading
- Data recording, storage, and graphing capabilities



Bluetooth Low Energy



Multi-platform software capability



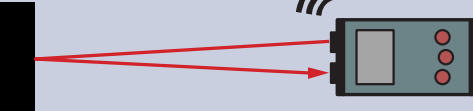
Multi-gage capability



Continuous recording and plotting



Data saving

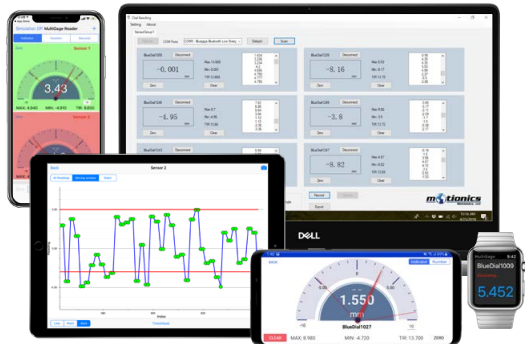


Laser Measure	Specification
Measurement Range	6 in - 165 ft/0.15 - 50 m
Resolution	± 1/32 in/0.5 mm
Accuracy	± 1/16 in/1.5 mm
Wireless Data Rate	2 Hz
Transmission Range	20 m
Dimensions	4.2 x 1.8 x 0.9 in
Working Temperature	-10 - 45 °C
Battery	2x AAA



### More Features with our FREE Apps/Software\*

- Multiple devices simultaneous reading
- Data plot on iPhone/iPad/Android
- Continuous or single data point recording
- Max, Min, TIR measurement
- Remote zeroing from the app
- GO/NG judgment with green/red color indication
- Real-time cloud data streaming worldwide
- Custom formula calculator
- Large analog probe meter with adjustable range
- Data saving in local database
- Data export in CSV via email and cloud drives
- Keyboard entry to Excel or SPC software on PC
- Apple Watch support



Availability of features varies between apps/platforms.

# Wireless 2-Axis Precision Digital Level



Digi-Pas DWL-1500XY is a Bluetooth enabled dual-axis precision digital level. Its high resolution (0.001") and high accuracy ( $\pm 0.002^\circ$  for 0 to  $\pm 0.5^\circ$  and  $\pm 0.004^\circ$  for other angles) measuring capability qualifies it for majority of entry level industrial applications. Additionally with its built-in Bluetooth Low Energy feature, user can easily read and capture leveling readings on the screen of an iOS/Android smart device or a Windows PC while adjusting machine's orientation.



## Features

- High resolution & high accuracy measurement
- Bluetooth Low Energy Technology
- Multiple platform support (iOS, Android, PC)
- Real-time and continuous reading



Bluetooth Low Energy



Multi-platform software capability



Multi-gage capability



Continuous recording and plotting



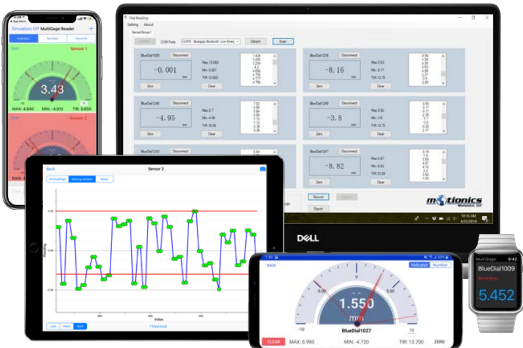
Data saving



DigiPas Level	Specification
Measurement Range	0 - $\pm 2^\circ$
Resolution	0.001"
Accuracy	$\pm 0.002^\circ$ (0-0.5"), $\pm 0.004^\circ$ (other angles)
Measurement Speed	$\leq 5$ sec
Transmission Range	15 m
Dimensions	6 x 2 x 1.5 in
Working Temperature	-10 - 50 $^\circ\text{C}$
Battery	2x AA

## More Features with our FREE Apps/Software\*

- Multiple devices simultaneous reading
- Data plot on iPhone/iPad/Android
- Continuous or single data point recording
- Max, Min, TIR measurement
- Remote zeroing from the app
- GO/NG judgment with green/red color indication
- Real-time cloud data streaming worldwide
- Custom formula calculator
- Large analog probe meter with adjustable range
- Data saving in local database
- Data export in CSV via email and cloud drives
- Keyboard entry to Excel or SPC software on PC
- Apple Watch support



Availability of features varies between apps/platforms.

# BlueDial Flat

## Wireless Dial Indicator

BlueDial Flat is a series of high-accuracy digital indicators with a built-in Bluetooth Low Energy transmitter. It operates on a single CR2032 battery and comes in three models to cover different measurement ranges and resolutions.

BlueDial Flat sends readings to iPhone/iPad/Android without the hassle of data cables, making data reading fast, safe, and error-free, especially in hard-to-reach places. Data can be remotely viewed and captured in a large digital readout or an analog probe meter, captured in single mode and saved on the mobile device.

### Features

- Built-in Bluetooth Low Energy, no external transmitter needed
- Multiple platform support (iOS, Apple Watch, Android)
- Remote data capturing
- Operates on one single CR2032 battery
- Offers both stem and back lug mounting options



BlueDial Flat	BDF-102	BDF-103	BDF-202
Measurement Range	0.5 in/12.7 mm	0.5 in/12.7 mm	1 in/25.4 mm
Resolution	0.0005 in 0.01 mm	0.00005 in 0.001 mm	0.0005 in 0.01 mm
Accuracy	± 0.001 in 0.02 mm	± 0.0002 in 0.004 mm	± 0.001 in 0.02 mm
Transmission Range	Up to 5m		
Working Temperature	0 - 40 °C		
Battery	CR2032		
Battery Life	3 months (with Bluetooth off) / 24hrs (with Bluetooth on)		
Mounting Options	Both stem and back lug		

### More Features with our FREE Apps/Software\*

- Simultaneous reading of multiple devices
- Data capture directly from app
- Max, Min, TIR measurement
- Remote zeroing from the app
- Large analog probe meter with adjustable range
- Full-screen large digital readout on the app
- Full-screen large analog readout
- GO/NG judgment with green/red color indication
- Real-time cloud data streaming worldwide
- Custom formula calculator
- Data saving in local database
- Data export in CSV via email and cloud drives
- Apple Watch support
- A great choice for machinists



Availability of features varies between apps/platforms.

# Wireless Crankshaft Deflection Kit



The Wireless Crankshaft Deflection Test Kit utilizes a Bluetooth crankshaft gage for crankshaft web deflection tests. By simply tapping on iPad, users can have deflection data recorded easily and error-free.

Thanks to the built-in angle measurement, there is no need to mark test points on the crankshaft web again. The Crankshaft Test app will notify users once the crankshaft rotates to test locations. A PDF test report can be generated and stored at the end of each test. This system covers various crankshaft web gaps ranging from 160 to 720 mm with an included extension rod set.



Crankshaft Deflection	Specification
Measurement Range	0.4 in/10 mm
Resolution	0.0001 in/0.001 mm
Accuracy	0.00012 in
Wireless Data Rate	10 Hz
Transmission Range	20 m (indoors)/ 30 m (outdoors)
Crankshaft Web Gap Range	160-720 mm 145-720mm optional
Working Temperature	0-50°C

Crankshaft Deflection	Specification
Connection	Bluetooth Low Energy
Angle Measurement Resolution	1°
Rechargeable Battery	400 mAh
Battery Life	50 hrs
Charging	5 VDC USB



Bluetooth  
Low Energy



Rechargeable



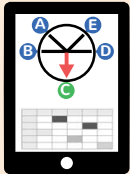
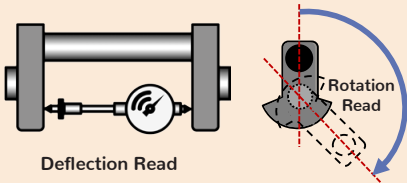
All-in-one gage



Both deflection and  
rotational measurement



Data saving



## Included in the Package:

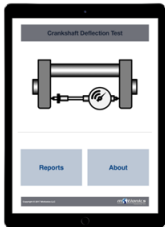
- Wireless Crankshaft Gage 1X
- Adjustable Probe 1X
- Extension Rod Set (1/2" to 6" one each) 1X
- 60° Punch 1X
- Protective Carrying Case 1X
- USB Charging Cable 1X
- USB Power Adapter 1X
- Crankshaft Deflection Test App for iPad

## App Features:

- Wireless data recording
- Rotating angle indicator
- Measurement results organized in table
- Automatic test point notification
- Automatic vertical/horizontal deflection calculation
- End play test included
- Test report generation
- Tester signature
- Local report storage manager
- Email report and wireless printing



For iPad



# Wireless Pile Load Test Kit

Wireless Pile Load Test Kit measures pile deflection under different load conditions with multiple (up to 6) Bluetooth dial indicators, BlueDials, and a Bluetooth pressure sensor, BluePSI, on iPad.

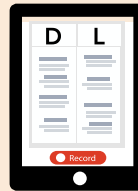
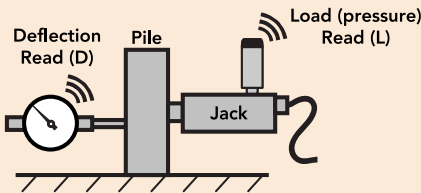
The BlueDials measure pile movements during load application, and the BluePSI, mounted on the hydraulic pump, monitors load change. The app runs on iPad and pairs with BlueDials and BluePSI. Readings from all wireless gages are synced, updated and logged in the app.



Bluetooth Pressure Sensor	Specification
Measurement Range	5K, 15Kpsi (more options available)
Accuracy	0.25% of full scale
Data Transmission Interval	5s (adjustable)
Transmission Range	Up to 20 m
Working Temperature	-20 - 85°C
Battery Life	2 years at 5s interval with CR2050
Pressure Port	1/4-18 NPT (more options available)

BlueDial	Specification
Measurement Range	2 in/50 mm (more options available)
Resolution	0.0005 in/0.01 mm
Accuracy	0.001 in
Wireless Data Rate	10 Hz
Transmission Range	20 m (indoors)/30 m (outdoors)
Working Temperature	0-50°C
Bluetooth Battery Life	50 hrs (rechargeable)

NOTE: Wireless Pile Load Test Kit can be customized with different pressure or BlueDial gages. Please contact us for details.

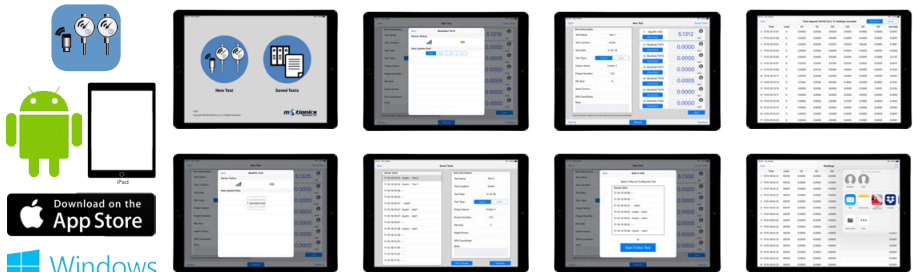


## Included in the Package:

- BlueDial(s): Bluetooth Dial Indicator(s)
- Bluetooth Pressure Sensor 1X
- Protective carrying case 1X
- Wireless Pile Load Test app for iPad
- iPad with rugged protective case (optional)

## App Features:

- Easy pairing/unpairing with sensors
- Simultaneous recording of BlueDials and pressure sensor
- Measurement results organized in table
- Remote zeroing of BlueDial readings in the app
- Automatic calculation of average deflection
- Option to enter jack calibration equation for automatic pressure-load conversion
- Excel CSV export via email
- Local saving on iPad for future access and export





# Wireless Benkelman Deflection Test Kit

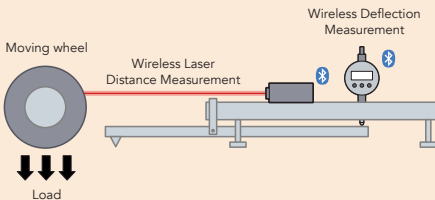


The Wireless Benkelman Test Kit is a novel tool for Benkelman beam deflection testing. It consists of a Bluetooth dial indicator, BlueDial, to measure deflection of flexible pavements under the action of moving wheel loads, and a Bluetooth laser measurer to measure distance between the Benkelman beam and the moving truck. The app/software on iOS/Android smart devices or Windows PC pairs with both Bluetooth measurement devices simultaneously to sync and record their readings.



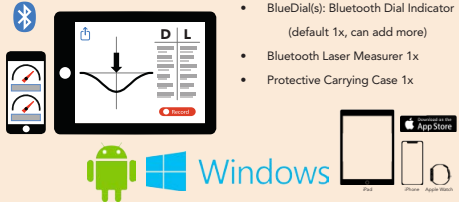
BlueDial	Specification
Measurement Range	0.5 in/12.7 mm, 1 in/25.4 mm, 2 in/50 mm
Resolution	0.0005 in/0.01 mm, 0.00005 in/0.001 mm
Accuracy	±0.001 in, ±0.0002 in
Wireless Data Rate	8 Hz
Transmission Range	30 m
Working Temperature	0-50 °C
Battery	400 mAh rechargeable, 50 hr battery life

Laser Measure	Specification
Measurement Range	6 in - 165 ft/0.15 - 50 m
Resolution	± 1/32 in/0.5 mm
Accuracy	± 1/16 in/1.5 mm
Wireless Data Rate	2 Hz
Transmission Range	20 m
Working Temperature	-10-45 °C
Battery	2x AAA



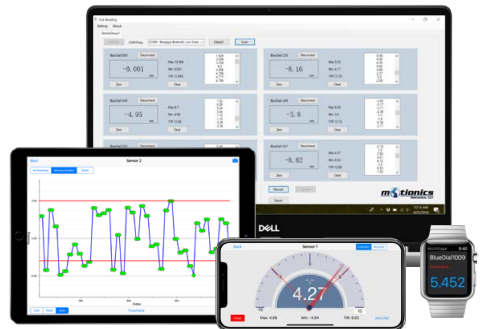
Included in the package:

- BlueDial(s): Bluetooth Dial Indicator (default 1x, can add more)
- Bluetooth Laser Measurer 1x
- Protective Carrying Case 1x



## More Features with our FREE Apps/Software\*

- Simultaneous reading of multiple devices
- Data plotting on iPhone/iPad/Android
- Continuous or single data point recording
- Max, Min, TIR measurement
- Remote zeroing from the app
- GO/NG judgment with green/red color indication
- Real-time cloud data streaming worldwide
- Custom formula calculator
- Large analog probe meter with adjustable range
- Data saving in local database
- Data export in CSV via email and cloud drives
- Keyboard entry to Excel or SPC software on PC
- Apple Watch support



\*Availability of features varies between apps/platforms.



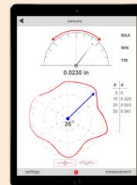
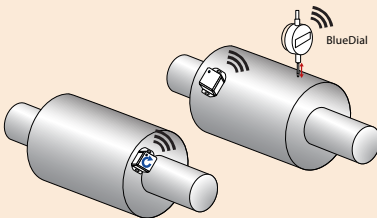
# Wireless Rotor Runout Kit

Wireless Rotor Runout Kit is a novel tool for rotor runout measurement. It consists of a Bluetooth dial indicator (BlueDial), a Bluetooth angle sensor (BlueAngle) and the iPad application Runout. Together, these sensors work to seamlessly measure both circumference deflection and rotor rotating angle to show the real contour of the rotor. The multiple-sensor connectivity of the app also allows users to add extra BlueDials to conduct runout tests on different planes simultaneously.



BlueDial BD10-783/793	Specification
Measurement Range	0.5 in/12.7 mm
Resolution	0.0005 in, 0.01 mm/0.0001 in, 0.001 mm
Accuracy	0.0008 in/0.00012 in
Wireless Data Rate	10 Hz
Transmission Range	20 m (indoors)/30 m (outdoors)
Working Temperature	0 - 50 °C
Rechargeable Battery	400 mAh
Battery Life	60 hrs

BlueAngle	Specification
Measurement Range	360 °
Resolution	0.1 °
Wireless Data Rate	50 Hz
Transmission Range	Up to 20 m
Dimensions	1.58 x 1.58 x 0.79 in
Working Temperature	0-50 °C
Rechargeable Battery	150 mAh
Battery Life	10 hrs



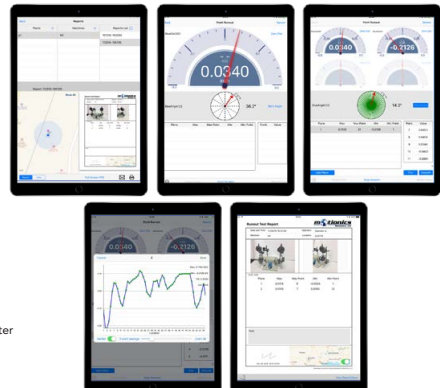
## Included in the Kit:

- BlueDial(s)
- BlueAngle 1X
- Rotor Runout iPad app



## App Features:

- Wireless connectivity with deflection (dial indicator) sensor and angle sensor
- Multiple sensor connectivity (up to 9 simultaneously)
- Probe meter for deflection readings
- User-defined range for probe meter
- Analog rotating indicator for rotor angular position
- Remote zeroing of deflection and angle sensors
- User-defined number of test points on rotor circumference
- Cartesian plot and polar plot
- Direct screenshot of the results and plots to save in local
- Values and positions of Max/Min summarized in result table
- Measurement export via AirDrop or email in CSV format
- PDF report with test information, machine image, test results, notes, tester signature and map
- Local test records manager to retrieve previous data and reports



# Wireless Pressure Measurement Kit



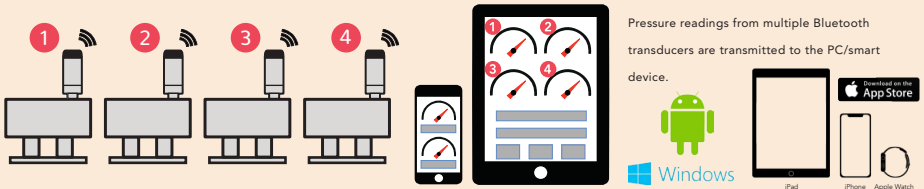
Wireless Pressure Measurement Kit uses an iPhone/iPad/Android/PC to connect to multiple Bluetooth pressure transducers (BluePSI) and simultaneously monitor pressure change at multiple locations. BluePSI is a series of pressure sensors for measurement of liquid or gas pressure. It has high resolution (24-bit ADC), high accuracy ( $\pm 0.25\%$ FS), a long battery life (up to 2 years with a coin battery), and a good water- and dustproof rate (IP67). Most importantly, it eliminates the need of hardwiring and manual data logging thanks to its Bluetooth 4.0 wireless connectivity. Users can easily monitor and record pressure conditions at multiple locations.

## Features

- Long battery life - up to 2 years with a standard coin battery
- IP67 harsh environment proof
- High accuracy reading  $\pm 0.25\%$  FS
- Multiple sensor reading capability up to 14 on iOS device



Bluetooth Pressure Sensor	Specification
Measurement Range	30 - 15,000 psi
Accuracy	$\pm 0.25\%$ FS
Proof Pressure	2x measurement range (20,000 psi max)
Burst Pressure	5x measurement range (20,000 psi max)
Transmission Range	Up to 20 m
Transmission Interval	5 s (adjustable)
Weather Proof	IP67
Working Temperature	-20 - 85 °C
Battery Life	2 years at 5 s interval with CR2050
Battery Type	CR2050/CR2032
Pressure Port	1/4-18NPT



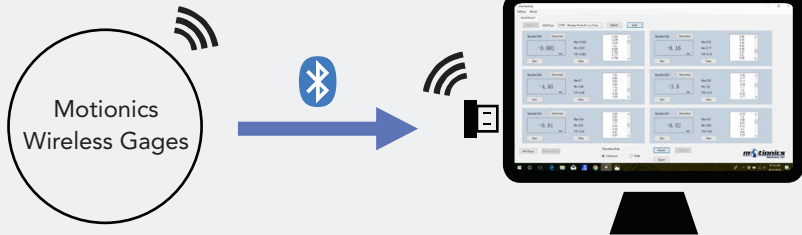
## More Features with our FREE Apps/Software\*

- Simultaneous reading of multiple devices
- Data plotting on iPhone/iPad
- Continuous or single data recording
- Max, Min, TIR measurement
- Remote zeroing from the app
- Real-time cloud data streaming worldwide
- Custom formula calculator
- Large analog probe meter with adjustable range
- Measurement voice read in 9 languages
- Data export in CSV via email and cloud drives
- Keyboard entry to Excel or SPC software on PC



\*Availability of features varies between apps/platforms.

## Wireless Reading in Windows with Dial-Reading®



Wireless Dial-Reading for Windows is a data collection tool for users to wirelessly connect, read, and record readings from Motionics wireless measurement devices on their Windows PC desktop or laptop. The software can simulate keyboard input, allowing data to be directly loaded onto any software product that accepts keyboard entry, such as Excel, text documents, and most SPC software.

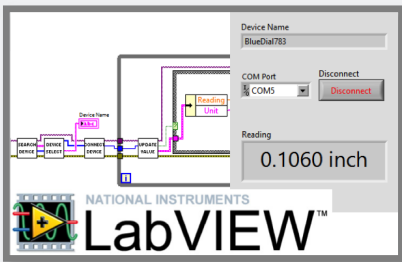
### Features:

- Multiple device connectivity (each dongle connects to up to 8 wireless devices)
- Multiple dongles can be added for more devices
- Each gage is assigned its individual panel for display and control
- Simultaneous data collection for all connected devices
- Continuous data recording and single reading capturing options
- Multiple continuous reading rates available
- Data keyboard entry to Excel, text and most SPC software



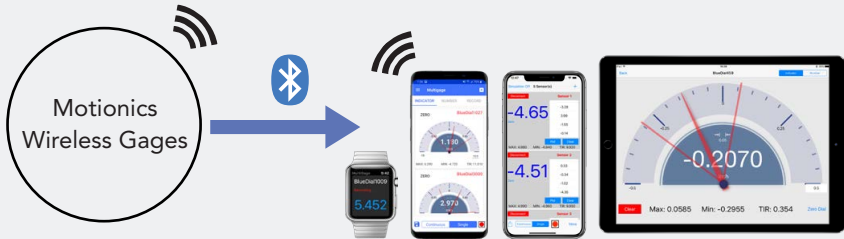
Data keyboard entry to Excel, text, and most SPC software

## Reading in LabVIEW



Dial Reading VI is available to wirelessly connect and read from Motionics WiMER and BlueDial in LabVIEW on PC. The VI covers all the procedures to search nearby devices, pair, and update readings. Users can freely add more controls for data collection and analysis, customize the VI for a specific application, or integrate it into an existing software.

## Wireless Reading on iOS and Android Devices with MultiGage®



MultiGage Reader app is able to connect to multiple Motionics Bluetooth measurement devices (14 on iOS, 8 on Android) and receive readings from all of them at the same time. Each device will be assigned an individual panel to display measurement reading, max, min, and TIR.

MultiGage Reader provides two options for data recording: continuous recording at up to 10 samples/sec, or one-by-one capturing through button tapping. Recorded data can be plotted in a user-interaction-enabled graph, saved in a database, and exported as a CSV file for further assessment.

Additionally, there are many more innovative features in the app, such as analog probe meter, cloud data streaming, custom calculator, and so on, to make dimensional measurement faster and easier.

### Features:

- Simultaneous reading of multiple devices
- Data plotting on iPhone/iPad/Android
- Continuous or single data point recording
- Max, Min, TIR measurement
- Remote zeroing from the app
- GO/NG judgment with green/red color indication
- Real-time cloud data streaming worldwide (iOS only)
- Custom formula calculator (iOS only)
- Large analog probe meter with adjustable range
- Data saving in local database
- Data export in CSV via email and cloud drives
- Apple Watch support





### Multigage

Multiple Wireless  
Displacement Measurement  
Devices Reader

iPhone/iPad/Apple Watch

MultiGage Reader is an app developed for users to simultaneously connect and read from multiple Motionics wireless measurement devices on an iOS device.



### Runout

Inspecting rotor runout  
on iPad with Motionics  
Wireless Runout Kit

iPad

Runout works with our Wireless Runout Kit, synchronizes displacement and angle measurements, and provides a convenient tool to inspect rotor runout on iPad.



### Crankshaft Test

A tool for Crankshaft  
Deflection Test with  
Wireless Sensor

iPad

This app works with our Wireless Crankshaft Deflection Test package to wirelessly capture sensor readings at 5 testing positions on the crankshaft and automatically calculates vertical and horizontal deflections.




### Pile Load Test

Pile Load Test with  
Wireless Indicator and  
Pressure Sensor

iPad

This app records deflection and pressure during pile load tests using our wireless indicator and pressure sensor.



### DialReadPad

Wireless Digital  
Instrument Reader  
and Analyzer

iPad

DialReadPad is the iPad version of DialRead, connecting to our BlueDial/WiMER and reading digital instrument measurements.




### DialFace

Wireless Digital  
Instrument Reader with  
Various Analog Dial Faces

iPhone

DialFace takes digital instrument readings from our BlueDial/WiMER and allows users to view results in various interactive analog dial faces.




### Multigage

Multiple Wireless  
Displacement Measurement  
Devices Reader

Android

MultiGage Reader is an app developed for users to simultaneously connect and read from multiple Motionics wireless measurement devices on an Android device.



### DialReading

Wireless Digital  
Instrument Reader  
on Android

Android

DialReading is developed for users to wirelessly connect to and read from WiMER and BlueDial on an Android device.