

# Wireless Laser Measure

## Bosch GLM50



Bosch GLM50 is a compact pocket size yet highly accurate laser distance measure. It measures distances from up to 165 feet to within 1/8 inch. Thanks to its built-in Bluetooth Low Energy technology, laser measurement readings can be easily picked up wirelessly in Motionics apps/software on iPhone, iPad, Android, and Windows PC. When working together with other measurement devices in applications such as Benkelman tests, GLM50 provides accurate coordinate reference and greatly facilitates the test process.



### Features

- Long-range and high-accuracy measurement
- Bluetooth Low Energy Technology
- Multiple platform support (iOS, Android, PC)
- Continuous laser reading
- Data recording, storage, and graphing capabilities



Bluetooth Low Energy



Multi-platform software capability



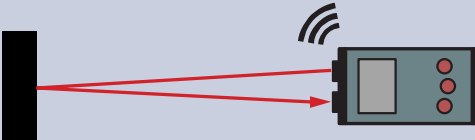
Multi-gage capability



Continuous recording and plotting



Data saving

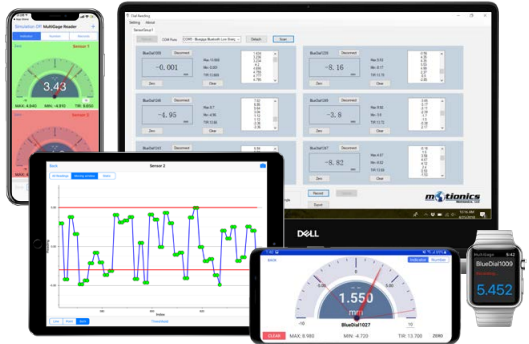


Laser Measure	Specification
Measurement Range	6 in - 165 ft/0.15 - 50 m
Resolution	± 1/32 in/0.5 mm
Accuracy	± 1/16 in/1.5 mm
Wireless Data Rate	2 Hz
Transmission Range	20 m
Dimensions	4.2 x 1.8 x 0.9 in
Working Temperature	-10 -45°C
Battery	2x AAA



### More Features with our FREE Apps/Software\*

- Multiple devices simultaneous reading
- Data plot on iPhone/iPad/Android
- Continuous or single data point recording
- Max, Min, TIR measurement
- Remote zeroing from the app
- GO/NG judgment with green/red color indication
- Real-time cloud data streaming worldwide
- Custom formula calculator
- Large analog probe meter with adjustable range
- Data saving in local database
- Data export in CSV via email and cloud drives
- Keyboard entry to Excel or SPG software on PC
- Apple Watch support



Availability of features varies between apps/platforms.