

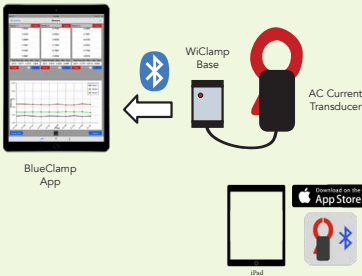
Wireless Current Measurement Kit



Wireless current measurement kit consists of an AC current transducer and a WiClamp base. It can measure the TRUE RMS value of current in a cable and transmit measurement results wirelessly via Bluetooth Low Energy.

Our free iPad app, BlueClamp, can simultaneously receive and display data from multiple WiClamp bases, turning the iPad into a multi-line current monitoring device.

This kit also includes a USB charging cable and a 110 VAC USB adapter.



Current Measurement Kit	Specification
Measurement Range	1-115 A RMS (10 mV/A), 1-400 A RMS (1 mV/A)
Resolution	0.3A (10 mV/A), 3A (1 mV/A)
Transmission Range	Up to 10 m
WiClamp Base Dimension	2.36 x 1.42 x 0.59 in
Transducer Dimension	2.52 x 5.63 x 1.18 in
Working Voltage	600 V CAT II
Operating Temperature	0 - 50 °C
Battery	350 mAh
Charging	5 VDC USB

BlueClamp App Features (iPad):

- Available now on the App Store for free
- Multiple clamp connectivity, up to 3 devices (can be upgraded to 10 devices on request)
- Real-time readings in both tables and plots
- Max, Min, Average
- Individual clamp adding/removing during measurement
- Individual plot control of each clamp
- Individual clamp calibration and preference setting
- Simulation mode for demonstration
- Multiple sampling frequencies: 2, 30, 60 seconds/sample
- Pause/resume during measurement
- Data export in CSV file
- Custom PDF report generation
- Add company logo and machine image in report
- Auto populate test date and test results in report
- User signature and custom note
- Facility location/map in report
- PDF report wireless printing and email export



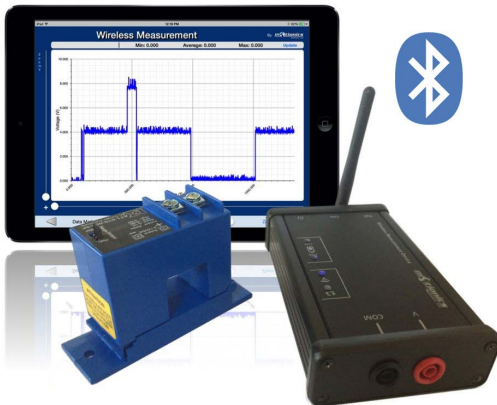
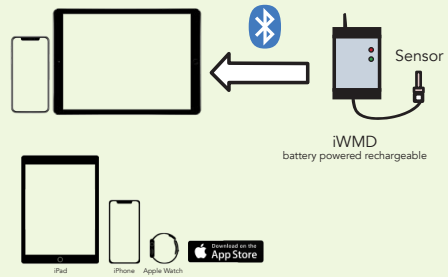
iWMD is a series of wireless measurement devices with high resolution. It allows the user to measure various sensor readings and communicate wirelessly with smart devices such as the iPad via Bluetooth Low Energy.

Applications:

- Remote Monitoring
- Power, Current & Voltage Monitoring
- Pressure Measurement
- Temperature Sensing (RTE, Thermocouple, Infrared)
- Crankshaft Deflection Detection
- Rotor Runout Assessment
- Wireless Metrology
- Flow measurement
- Oil characteristics sensing



Current Measurement Kit	Specification
Resolution	10, 5, 1, 0.2, 0.1 mV
Wireless Data Rate	1-1,000 Hz
Transmission Range	Up to 10 m
Input Range	0 - 10, 0 - 5, 0 - 1.1 VDC
Dimension	5.04 x 3.07 x 1.06 in
Sensor Supply Voltage	5-20 VDC
Antenna Extension	Magnetic Base
Working Temperature	0 - 50 °C
Battery	2,500 mAh
Charging	5 VDC USB and 110 VAC



App Features:

- Multiple wireless sensor connectivity
- Display acquired data in real-time graph
- Record data, CSV and SQLite export
- Quick custom PDF report with image, signature, map and GPS location
- Export via email, cloud, and USB cable
- Zoom, pan, max, min, and average



PowerReader reads analog DC signals through WiFi channels of the iPad from any of our iWMD devices, suitable for power monitoring, temperature sensing, etc.



The BlueClamp app reads the TRUE RMS current measurements from WiClamp and shows the readings in tables and real-time plots.